



2014

Intruder Alarm Systems
Product Catalogue

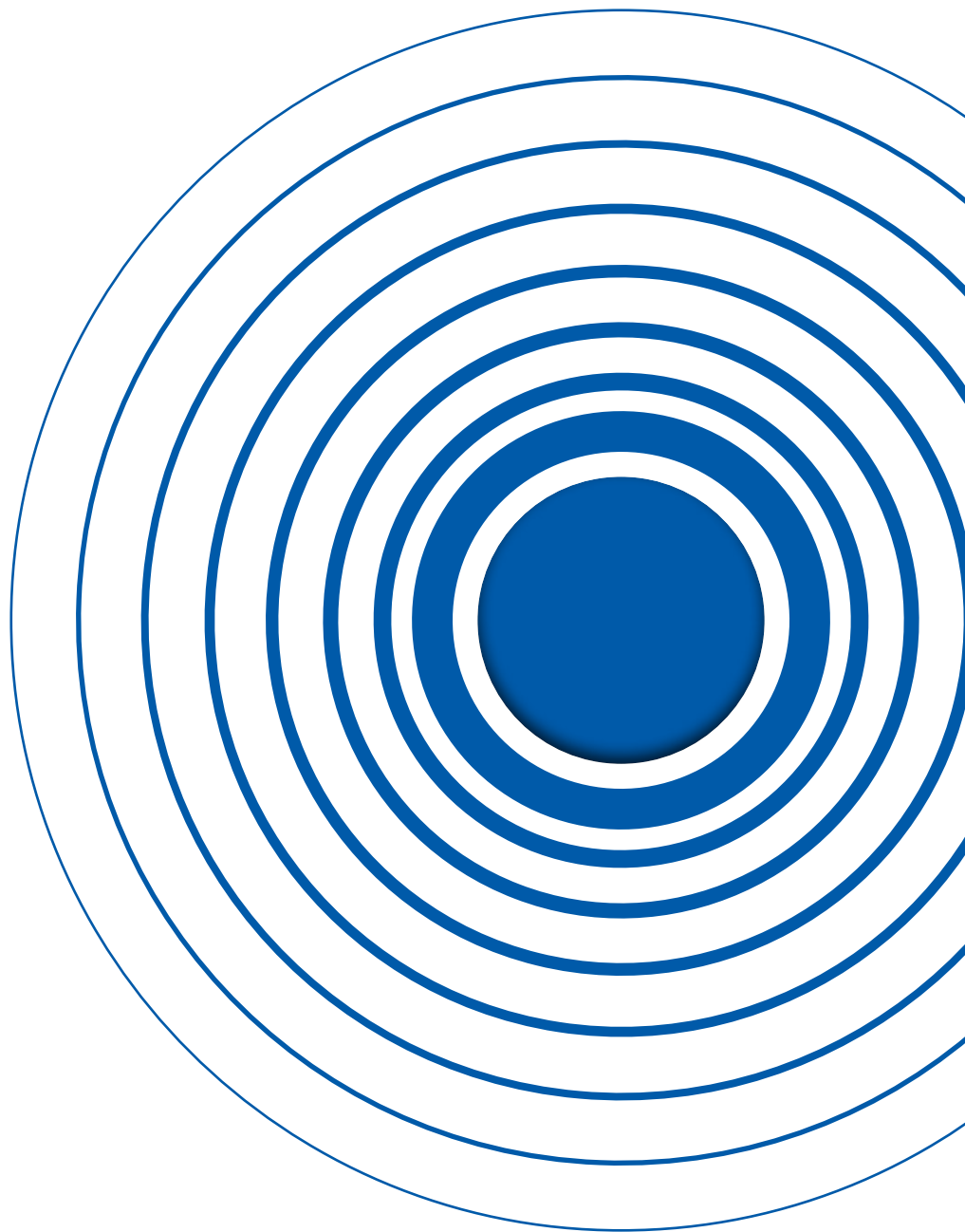


Table of contents

2014

Intruder Alarm System

4	COMPANY PROFILE
6	ECLIPSE SERIES
7	Eclipse Series Intruder Alarm Panels
8	Eclipse 8
10	Eclipse 32
12	Eclipse 99
13	Eclipse Controlling Devices
14	Eclipse Modules
15	Wireless Devices
16	CA SERIES
17	CA Series Intruder Alarm Panels
18	CA62 Intruder Alarm Panels
19	CA62 Periphery
20	CA824/CA 864 Intruder Alarm Panels
21	CA824/CA 864 Periphery
22	VEGA6 INTRUDER ALARM PANEL
23	DETECTORS
24	Titan PIR Detectoes
26	Titan Dual Technology PIR Detectors
28	Other Detectors
29	Fire Alarm Detectors
30	Sirens
31	Accessories
32	COMMUNICATION
33	Ajax Solution
36	Argus GSM
36	Long Range Radio
37	SOFTWARE
38	ProsTE Programming Software
38	Guard View Monitoring Software

TELETEK ELECTRONICS JSC IS A HIGH-TECH MANUFACTURER OF A FULL RANGE OF INTRUDER AND FIRE ALARM SYSTEMS

Teletek Electronics is a Subsidiary of Teletek Group Holding, Bulgaria.

Today, 22 years after the establishment of Teletek Electronics JSC, we continue to create, research and realize new ideas for better intruder and fire security products.

In order to meet our clients' contemporary and growing needs, we started researching and introducing not just separate products, but complete security and fire alarm system solutions, suitable for large range of applications - residential homes and small offices, houses, country houses, medium to large trade buildings (including storehouses, supermarkets, etc).

On the basis of the reliable client feedback we continue improving the quality and features of our product range. We believe in addressing our customers' needs no matter how small or big they may be.

Teletek Electronics' efforts are dedicated to its customers. We are proud we can provide effective Customer Support by facilitating:

- Requests processed on the day they are received;
- Help desk for customer technical support;
- Training - In-house or On site.

As recognition for its high quality and reliable production Teletek Electronics JSC is awarded with ISO 9001:2008 Certificate.

Teletek Electronics JSC has already established itself as a Company with traditions and reliable solutions in intruder and fire alarm systems - our products are already well known in more than 65 countries all over the world.



The heart of Teletek Electronics' success is its productive flexibility that is expressed not only in the wide production range but also in the ability to design and make specific and exclusive versions of the product in collaboration with the Customer. This important plus brings about obvious advantages, especially in the area of intruder and fire alarm systems where the possibility to actuate a customized product is sometimes very hard to find.

Our company works with 2 hi-tech SMD lines consisting of DEK Ela screen, PHILIPS Topaz-X Pick and Place machines and ERSa Hotflow5 oven. With capability of placing over 30 000 components per hour, The Pick and Place machines enable our high skilled and motivated engineers to mount fine pitch components, BGA components and micro BGA components as well as Doublesided Reflow Soldering.

As of today, over 120 young and highly educated specialists work in the company's 6 departments to ensure a full business cycle – from market research and generation of product ideas to the development, production and marketing of the end product.

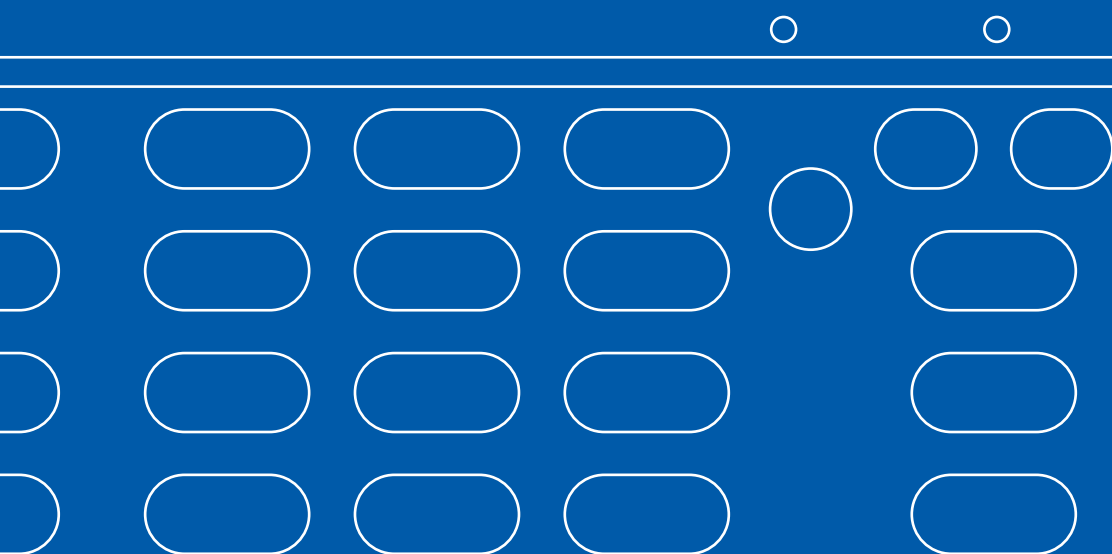
The Marketing and Sales together with Product Management and Technical support teams are the link between the company and its valued customers. As a customer – oriented company Teletek Electronics strives to maintain a constant bond with its Clients by trying to respond to their technical and market needs. We have gained valuable experience in making custom made solutions for our top Clients to their specifications and individual preferences.

Thousands of installations have been carried out with Teletek's intruder and fire alarm ranges in over 65 countries in the last 22 years. This gives us the confidence that there is no obstacle we cannot overcome together with our Partners.

We do believe that our Partners are not just our Customers but also friends. We are successful because of them and we will continue to work successfully together because Teletek Electronics is the security system manufacturer you can rely on!



ECLIPSE SERIES



ECLIPSE

INTRUDER ALARM PANELS

Contemporary range of panels working with one and the same devices – expanders, keypads, software, etc.

Different types of programming – by addresses, by operations and text menus

Ease of installation, programming and operation

Automatic addresses for all devices in a configuration

Innovative design

Eclipse 8

Eclipse 32

Eclipse 99

Zones on board	6 + 2 keypad zones	8 (optional - doubling)	16 (optional - doubling)
Max. Zones	8	32	99
Partitions	1	8	16
Zone 8 - Zone expansion	No	Yes	Yes
PGM 8 - PGM expansion	No	Yes	Yes
User codes or proxy cards	8	64	99
Event log	256	1024	5000
Power supply	1A	2.5A	2.5A
Communications	PSTN, GSM/GPRS	PSTN, GSM/GPRS	PSTN, GSM/GPRS
Keypads	LED, LCD	LED, LCD	LED, LCD
Access control & time attendance	No	No	Yes
BUS devices	4 max	32 max	64 max

ECLIPSE 8

INTRUDER ALARM PANEL

- Simple entry level solution
- Full programming via keyboard or directly with ProsTE software

Eclipse 8 is an alarm panel with 8 zone inputs for security of small residential, commercial and office premises. The control management of the panel is available via keyboard or proximity card reader. Full programming is done via keyboard or directly with ProsTE software. The installer can choose between 3 alternative types of programming - by addresses, by operations or tree structure menus. The panel has a built in digital communicator and is compatible with wide range of detectors, communication modules and control devices.

Zone Inputs:	6 physical inputs on the control panel for connection of detectors + 2 zone inputs in the connected keyboards.
Zones:	Up to 8 zones with freely programmable parameters.
Zone wiring:	5 types, single connection style.
Areas:	1
Outputs:	4 weak (up to 100mA) and 1 powerful (up to 1A) programmable outputs OC (open collector) type, situated on the control panel. ; Range of activation events for outputs management. Available programming of PGM4 for operation with TP2000 transmitter on serial connection.
Access Codes:	4-digit; 8 User codes (1 Manager + 7 Users), 1 Engineer code.
Memory LOG:	256 memory events with data and hour of occurring – can be viewed via keyboard or ProsTE software.
Report to monitoring:	Built-in digital communicator for telephone line reporting – “Contact ID” and “SIA” supported. AJAX - LAN (TCP/IP) and AJAX GPRS communication modules.
Peripheral Devices:	Up to 2 devices connected to the system bus. <ul style="list-style-type: none"> • LCD and LED Keyboards. • Proximity card readers.
Programming:	3 programming menu styles <ul style="list-style-type: none"> • By addresses • By operations • Text menus (tree structure)



Technical Specifications

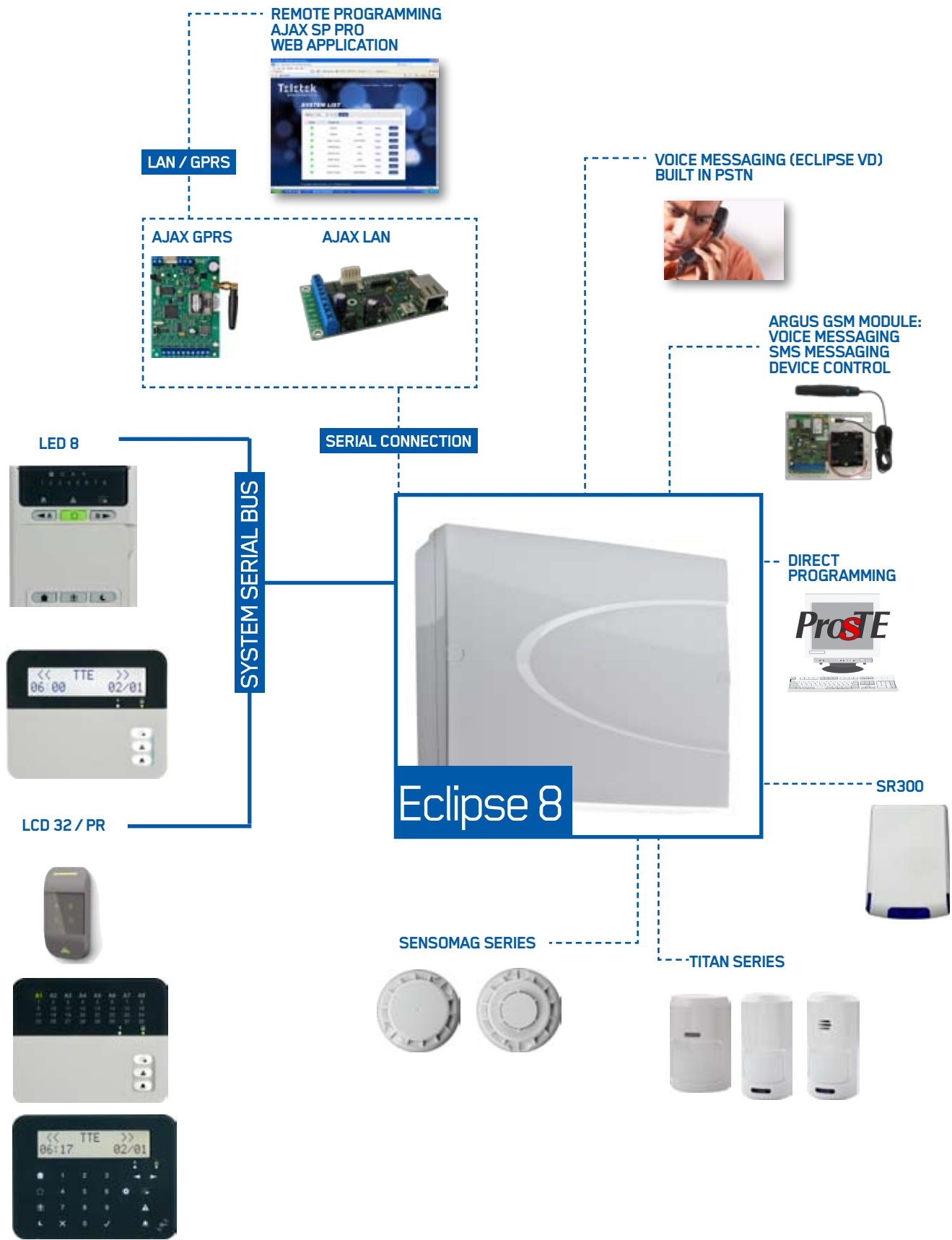
Mains Power Supply:	230 VAC ±10%
Mains Transformer:	17 VAC / 17 VA
Back-up Power Supply:	Accumulator 12 V / 7 Ah
Consumption of the control panel:	100 mA
Connecting Wires:	2.5mm
Enclosure:	ABS plastic box, white
Working Temperature Range:	from -10°C to +60°C
Storage Temperature Range:	from -20°C to +60°C
Dimensions:	290 x 240 x 80 mm

Installer Advantages

- ESD protection against storm discharge
- Real time view of the voltage on each zone
- Real time view of the communication quality on the BUS
- Full remote management (programming) of the system through internet
- Status indicator on each device, for: short circuit, low voltage and wiring error on the bus

ECLIPSE 8

INTRUDER ALARM PANEL



ECLIPSE 32

INTRUDER ALARM PANEL

- Hybrid solution with impressive functionality
- Up to 32 zones and 8 partitions

Eclipse 32 is up to 32 zone control panel appropriate for security of medium sized commercial premises and offices. The panel supports 8 areas (partitions) with individual programming. Eclipse 32 has 8 physical inputs on board for connecting of detectors; The full configuration of 32 zones can be realized with doubling zone connection and/or Zone expander modules for 8 zones. The installer can choose between 3 alternative types of programming - by addresses, by operations or tree structure menus.

Zone Inputs:	8 physical inputs on control panel for connecting of detectors
Zones:	Up to 32 zones with freely programmable parameters
Zone wiring:	9 types, single or doubling connection style.
Areas:	8
Access Control:	Via proximity card readers. 8 Time slots (tables) to manage the user access to the protected sites. Every time slot can be programmed individually according the system requirements.
Outputs:	4 weak (up to 100mA) and 1 powerful supervised siren (up to 1A), situated on the control panel; Expanding up to 32 outputs using PGM expander module.
Access Codes:	4/ 6 digit; 64 User codes, 1 Maintenance code, 1 Engineer code.
Memory LOG:	1024 events with time and date - can be viewed by a keyboard or via ProsTE software.
Report to monitoring station:	Built-in digital communicator for telephone line reporting - "Contact ID" and "SIA" supported. - AJAX - LAN (TCP/IP) and AJAX GPRS communication module.
Peripheral Devices:	Up to 30 devices connected to the system bus. <ul style="list-style-type: none"> • LCD and LED Keyboards. • Zone and PGM Expanders • Proximity card readers.
Programming:	3 programming menu styles <ul style="list-style-type: none"> • By addresses • By operations • Text menus (tree structure)



Technical Specifications

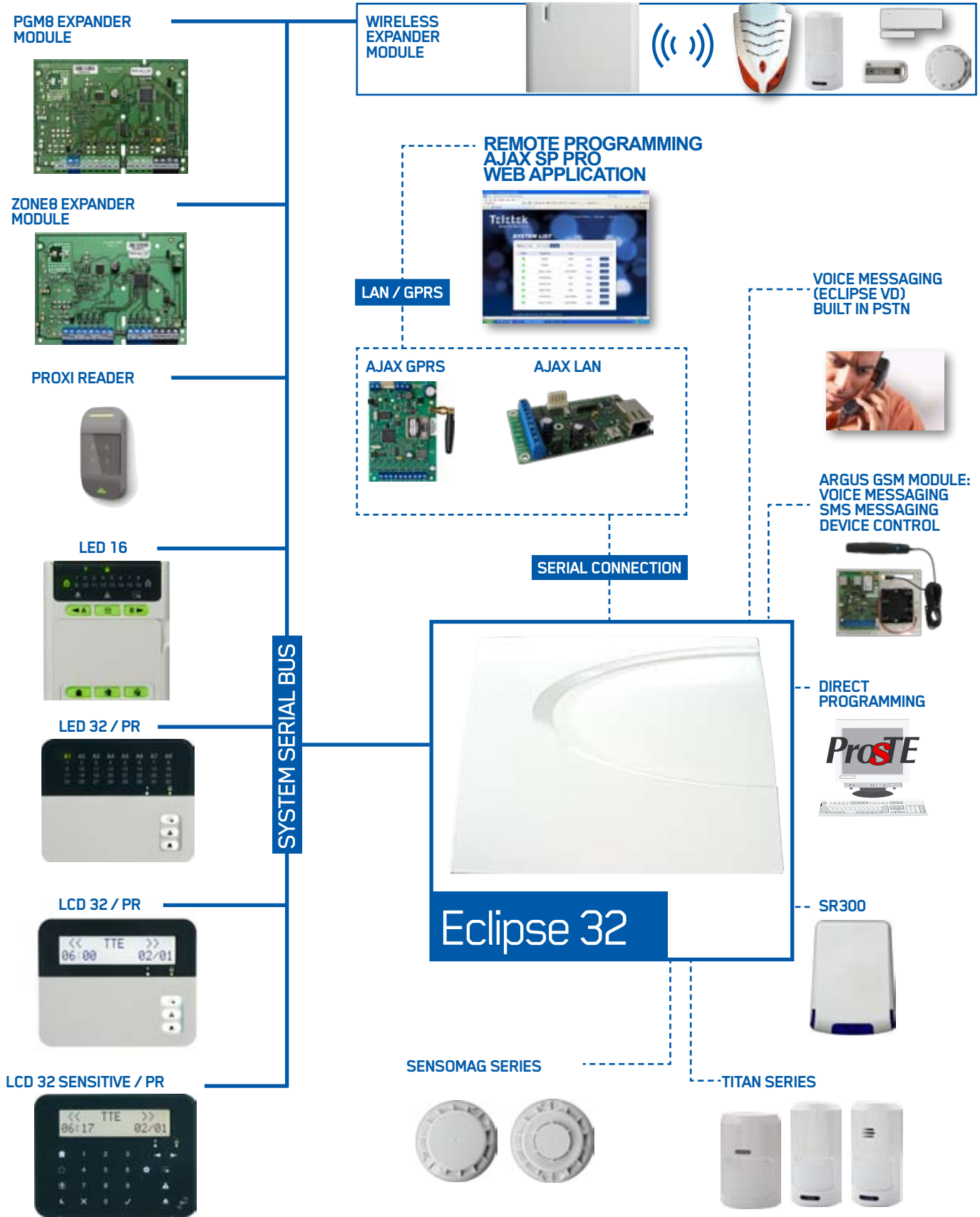
Mains transformer:..... 230 VAC / 50 VA
Accumulator battery:..... 12 V / 7 Ah
Current consumption:..... 100 mA
Power output:..... 3.8 V DC / 1A, resettable fuse
Operating temperature range: . from 0°C to 50°C
Enclosure box: ABS plastic, white
Dimensions: 335 x 290 x 105 mm

Installer Advantages

- ESD protection against storm discharge
- Real time view of the voltage on each zone
- Real time view of the communication quality on the BUS
- Full remote management (programming) of the system through internet
- Status indicator on each device, for: short circuit, low voltage and wiring error on the bus
- 45 degrees terminals
- Color coded terminals

ECLIPSE 32

INTRUDER ALARM PANEL



ECLIPSE 99

INTRUDER ALARM PANEL

- High end hybrid solution with access control functions
- Up to 99 zones and 16 partitions

Eclipse 99 is up to 99 zone control panel appropriate for security of large commercial and office premises. The panel supports 16 areas (partitions) with individual programming. The panel has access control functions and allows the use of wireless devices via wireless expander modules. The installer can choose between 3 alternative types of programming - by addresses, by operations or tree structure menus.

Zone Inputs:	8 physical inputs on control panel for connecting of detectors
Zones:	Up to 99 zones with freely programmable parameters
Zone connection styles:	9 types, single or doubling connection style.
Areas:	16 independent
Access Control:	Via proximity card readers. 8 Time slots (tables) to manage the user access to the protected sites. Every time slot can be programmed individually according the system requirements.
Outputs:	3 weak (up to 100mA), 1 powerful supervised siren (up to 1A), 1 relay situated on the control panel; Expanding up to 99 outputs using PGM expander module.
Access Codes:	4/ 6 digit; 99 User codes, 1 Maintenance code, 1 Engineer code.
Memory LOG:	5000 events with time and date - can be viewed by a keyboard or via ProsTE software.
Report to monitoring station:	Built-in digital communicator for telephone line reporting – "Contact ID" and "SIA" supported. AJAX - LAN (TCP/IP) and AJAX GPRS communication module.
Peripheral Devices:	Up to 64 devices connected to the system bus. <ul style="list-style-type: none"> • LCD and LED Keyboards • Zone and PGM Expanders. • Proximity card readers.
Programming:	3 programming menu styles <ul style="list-style-type: none"> • By addresses • By operations • Text menus (tree structure)



Technical Specifications

Mains transformer:	15-26 VAC / 50 VA
Accumulator battery:	2 V / 7 Ah
Current consumption of control panel:	100 mA
Power output:	13.8 V DC / 1A, fuse
Operating temperature range:	from 0°C to 50°C
Enclosure box:	ABS plastic, white
Dimensions:	335 x 290 x 105 mm

Installer Advantages

- ESD protection against storm discharge
- Real time view of the voltage on each zone
- Real time view of the communication quality on the BUS
- Full remote management (programming) of the system through internet
- Status indicator on each device, for: short circuit, low voltage and wiring error on the bus
- 45 degrees terminals
- Color coded terminals

ECLIPSE

CONTROL DEVICES



Eclipse LCD32/PR

- LCD keypad with silicon buttons
- Text display for 2x16 symbols organized into two rows
- Supports all 3 programming types
- Quick buttons for all arming modes
- Quick buttons for Memory, Troubles display and Bypassed zones
- 3 fast button combinations for sending of PANIC, MEDICAL and FIRE alarm messages to a central monitoring station

- Confidential mode
- Adjustable intensity of backlight for the display and buttons
- Adjustable buzzer volume
- Adjustable text scroll up
- Bidirectional TAMPER switch
- Real time clock
- Built in proxy reader as option



Eclipse LCD32S PR

- LCD keypad with sensitive buttons
- Text display for 2x16 symbols organized into two rows
- Supports all 3 programming types
- Quick buttons for all arming modes
- Quick buttons for Memory, Troubles display and Bypassed zones
- Adjustable intensity of backlight for the display and buttons

- 3 fast button combinations for sending of PANIC, MEDICAL and FIRE alarm messages to a central monitoring station
- Confidential mode
- Adjustable buzzer volume
- Adjustable text scroll up
- Bidirectional TAMPER switch
- Real time clock



Eclipse LED32/PR

- LED keypad
- Indication for 32 zones and 8 areas
- Supports 2 programming types: by addresses and by operations
- Quick buttons for all arming modes;
- Quick buttons for Memory, Troubles display and Bypassed zones
- Adjustable intensity of backlight for the display and buttons

- 3 fast button combinations for sending of PANIC, MEDICAL and FIRE alarm messages to a central monitoring station
- Adjustable buzzer volume
- Bidirectional TAMPER switch
- Built in proxy reader as option



Eclipse LED16

- LED keypad
- Indication for 16 zones and 2 partitions
- Supports 2 programming types: by addresses and by operations
- Quick buttons for all arming modes
- Quick buttons for Memory, Troubles display and Bypassed zones
- Adjustable intensity of backlight for the display and buttons

- 3 fast button combinations for sending of PANIC, MEDICAL and FIRE alarm messages to a central monitoring station
- Adjustable buzzer volume
- Bidirectional TAMPER switch



Eclipse LED8

- LED keypad
- Indication for 8 zones and 1 area
- Supports 2 programming types: by addresses and by operations
- Quick buttons for all arming modes
- 3 fast buttons' combination for sending of PANIC, MEDICAL and FIRE alarm messages

- Adjustable intensity of backlight for the display and buttons
- Adjustable buzzer volume
- Bidirectional TAMPER switch



Eclipse PR

- Proximity reader
- Arming /disarming and alarm clearing in many partitions by means of proximity cards
- Four sensitive buttons for Full arm, Disarm, Mode A and Mode B

- Indication of system arming mode (Full arm, Disarm, Mode A, Mode B)
- Indication of card status (valid and not valid card)
- One output (100mA OC or Relay)
- One zone input

ECLIPSE

MODULES



Eclipse VD

- Voice Dialer
- Plug-in card to panel PSTN
- Up to 8 phone numbers for voice reporting
- Supports unlimited number of zones and areas
- Remote arm/disarm guided by voice
- Remote output control guided by voice
- Remote system status checking guided by voice
- Multilingual support
- Easy language update (languages are stored on SD card)



Eclipse Zone 8

- Zone expander
- Connection directly to the system bus
- 8 additional zone inputs with freely programmable parameters
- Additional PGM output, 100mA, OC type (open collector)
- Mounting in the panel box or in small universal plastix box SB-U



Eclipse PGM 8

- PGM expander
- Connection directly to the system bus
- 8 additional programmable outputs with freely programmable parameters, 100mA, OC type (open collector)
- Mounting in the panel box or in small universal plastix box SB-U



Eclipse Zone 8 PS

- Zone expander with power supply
- Connection directly to the system bus
- 8 additional zone inputs with freely programmable parameters
- Additional PGM output, 100mA, OC type (open collector)
- Own independent power supply
- Mounting in the panel box or in small universal plastix box PB-U



Eclipse PGM 8 PS

- PGM expander with power supply
- Connection directly to the system bus
- 8 additional programmable outputs with freely programmable parameters, 100mA, OC type (open collector)
- Own independent power supply
- Mounting in the panel box or in small universal plastix box PB-U



Eclipse Wireless Expander

- 868 MHz Band
- Two way communication
- Frequency agility
- Up to 32 wireless detectors (PIR, MC, Flood, FD)
- Up to 32 remote controls
- Up to 2 wireless sirens
- Mounting in SB-U small plastic box

WIRELESS

DEVICES



BRAVO PIR

- Digital IR detector
- 90 degrees coverage area in 54 zones
- Operating range up to 15m
- Pet Immunity -12 kg
- White light immunity – 5200 lx
- Temperature compensation
- Optional bracket for easy installation
- CR123 lithium battery
- 3 years battery life



BRAVO SR

- Electromagnetic outdoor siren
- Acoustic pressure: 116dB/1m
- Bidirectional tamper
- Internal metal cover
- LED flash
- 3*CR34615 lithium batteries
- 3 years battery life
- Operating temperature: -30°C to +65°C



BRAVO RC

- 4 button remote control
- Two way communication
- Panel state indication on request
- Functions: Arm, Disarm, Info and *(programmable)
- CR2450 lithium battery
- 3 years battery life



BRAVO FD

- Combined Optical-smoke and heat detector
- Comply with EN54-5,7
- Rate of rise heat part
- Optical chamber auto compensation
- CR123 lithium battery
- 3 years battery life



BRAVO MC

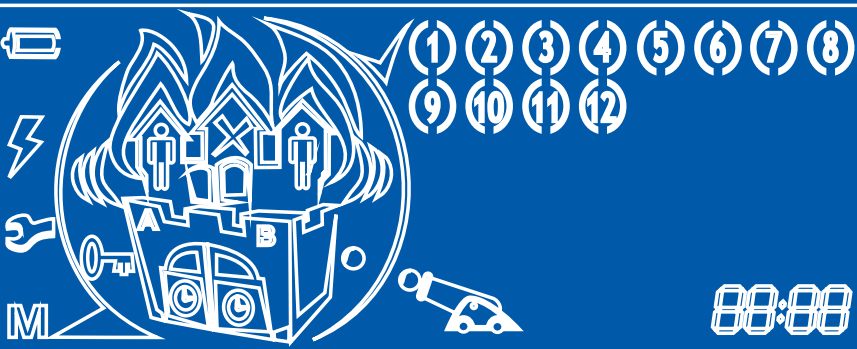
- Magnetic contact detector
- Option to add wired magnetic contacts
- CR123 lithium battery
- 3 years battery life

BRAVO FL

- Flood detector
- CR123 lithium battery
- 3 years battery life

CA SERIES

Teletek
electronics



READY

ARM

TRBL

ARM

DISARM

BPS

TRBL

MEM



PRG



1

2

3

4

5

6

7

8

9

CLR

0

ENT



Series of panels that have endured the test of time

Tried and tested in thousands of installations in more than 60 countries on 4 continents

Reliable and robust solution at a competitive price

CA62

CA824

CA864

	CA62	CA824	CA864
Zones	5 + 1 keypad zone	8 (optional - doubling)	4 (optional - doubling)
Max. zones	12 (zone doubling)	24	64
Partitions	2	8	16
Zone expansion	No	Yes	Yes
PGM expansion	No	Yes	Yes
User codes or proxy card	16	31	96
Event log	256	256	1000
Power supply	1A	2.5A	2.5A
Communications	PSTN, GSM/GPRS/LAN	PSTN, GSM	PSTN, GSM
Keypads	LED, LCD	LED, LCD	LED, LCD
Access control & time attendance	no	no	yes
BUS devices	6 max	16 max	32 max

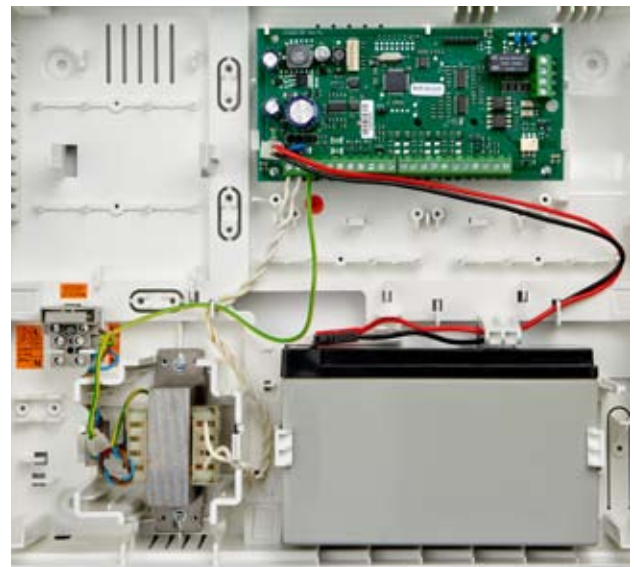
CA 62

INTRUDER ALARM PANEL

- Flexible solution with up to 12 zones and 2 areas
- Full programming via keyboard or directly with ProsTE software

CA 62 is up to 12 zone alarm control panel with 2 partitions, appropriate for security of homes, medium sized commercial premises and offices. The panel can be managed by means of a keypad - LED or LCD; proximity cards reader; remote controls, or remote programming software. Programming is done via keypad or programming software ProsTE. CA 62 has a built in digital communicator for sending alarm messages to monitoring station.

Zone Inputs:	5 physical inputs on the control panel for connection of detectors + 1 zone inputs in the connected keyboards.
Zones:	Up to 12 zones with freely programmable parameters.
Zone wiring:	5 types, single connection style.
Areas:	2
Outputs:	3 weak (up to 100mA) and 1 powerful (up to 1A) programmable outputs OC (open collector) type, situated on the control panel. ;
Access Codes:	4/6-digit; 20 User codes, 4 Manager, 1 Engineer code.
Memory LOG:	256 memory events with data and hour of occurring
Report to monitoring:	Built-in digital communicator for telephone line monitoring – “Contact ID” and “SIA” supported. AJAX - LAN (TCP/IP) and AJAX GPRS communication module.
Peripheral Devices:	Up to 4 devices connected to the system bus. <ul style="list-style-type: none">• LCD and LED Keyboards.• Proximity card readers.
Programming:	<ul style="list-style-type: none">• By addresses• ProsTE software



Technical Specifications

Mains Supply Voltage:	230V ± 10%
Mains Transformer:	17VAC / 17 VA
Back-up Battery:	12V / 7 Ah
Current consumption:	100 mA
Power output:	13.8 V DC / 1 A, Fuse
Keypads:	up to 4 (LED and LCD)
Proximity readers:	up to 2
Operating Temperature:	0°C / +50°C
Dimensions, plastic box:	335 x 290 x 105 mm
Dimensions, metal box:	318 x 258 x 75 mm

CA 62

PERIPHERY



LCD 64

- LCD keypad
- Blue icon display
- Display for 12 zones and 2 partitions
- 1 programmable zone input
- Fast button combinations for PANIC, FIRE, MEDICAL alarm messages
- Shortcut buttons for viewing Memory, Troubles, etc.
- Real time clock
- Bidirectional tamper switch



LED 62

- LED keypad
- Shortcut buttons for quick arming
- 3 fast buttons for sending of FIRE, MEDICAL and PANIC alarm messages to a central monitoring station
- Display of 12 zones and 2 partitions
- 1 programmable zone input
- The system parameters can be fully programmed
- Bidirectional TAMPER switch



PR 62

- Proximity Reader
- Bicolor LED indicator for command status
- Built-in buzzer for audio-acknowledgement
- Distance of detection - up to 10 cm
- Distance to panel - up to 250m



VD 60

- Voice Dialer
- 8 individual pre-recorded messages up to 4sec. each for event description
- User confirmation with button
- 2 modes with different types of messages (by zones or by events)
- Programmable number of dialing attempts
- LED status indicator and LED message number indicator

CA 824/ CA864

INTRUDER ALARM PANELS

- Modular solutions for medium to large sized sites
- Installation wizard for system initialization

CA824 and CA864 are expandable alarm panels for use in medium to large premises. CA864 allows automatic arming, disarming and bypassing of areas by time slot as well as user code validity control. The panels possess an intuitive installation wizard that guides installers during the set up of the system. They have been proven as a reliable and cost-effective solution for various applications.

Zone Inputs:	8 physical inputs on the control panel
Zones:	Up to 24 zones with freely programmable parameters.
Areas:	8
Access Control:	via proximity card readers.
Outputs:	4 PGM outputs. Expandable to 16.
Access Codes:	31 User codes
Memory LOG:	256 memory events with data and hour of occurring
Report to monitoring:	Built-in digital communicator for telephone line monitoring – "Contact ID" and "SIA" supported.
Peripheral Devices:	Up to 16 devices connected to the system bus. <ul style="list-style-type: none"> • LCD Keyboards. • Proximity card readers.
Programming:	• By addresses

Zone Inputs:	4 physical inputs on the control panel
Zones:	Up to 64 with freely programmable parameters.
Areas:	16
Access Control:	via proximity card readers.
Outputs:	5 PGM outputs. Expandable to 48.
Access Codes:	96 User codes
Memory LOG:	1000 memory events with data and hour of occurring
Report to monitoring:	Built-in digital communicator for telephone line monitoring – "Contact ID" and "SIA" supported.
Peripheral Devices:	Up to 32 devices connected to the system bus. <ul style="list-style-type: none"> • LCD Keyboards. • Proximity card readers.
Programming:	• By addresses



CA 824/ CA864

PERIPHERY



LCD 824

- LCD remote keypad for CA 824
- 1 programmable zone
- 1 programmable output
- 3 programmable buttons combinations for FIRE, MEDICAL and PANIC alarm messages to a central monitoring station
- Full control over 8 areas



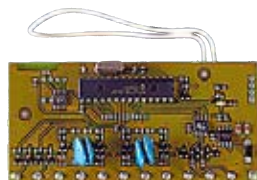
LCD 864

- LCD remote CA 864 keypad
- 1 programmable zone
- 1 programmable output
- 3 programmable buttons combinations for sending of FIRE, MEDICAL and PANIC alarm messages to a central monitoring station
- Full control over 16 areas



PR 864

- Proximity reader
- Bicolor LED indicator for command status
- Built-in buzzer for audio-acknowledgement
- Compatible with CA824 and CA864



MRI 4/8

- Zone expander module for 4/8 zones
- 2 programmable outputs
- Possibility for integration in small universal plastic box (SB-U)
- Compatible with CA824 and CA864



MRO 8

- 8 programmable outputs, OC type
- Possibility for integration in small universal plastic box (SB-U)
- Compatible with CA824 and CA864



APC 864

- RS485 - RS232 converter
- Compatible with CA864

VEGA6

INTRUDER ALARM PANEL

- Panel with built in radio transmitter module
- Full programming via keyboard or directly with ProsTE software

VEGA6RF is a 6 zone control panel with built-in VHF or UHF radio transmitter unit. It is appropriate for residential homes, small offices and shops. The VEGA6 RF panel is especially designed for the markets, where radio transmission is the predominant communication channel for alarm systems. VEGA6 RF can be managed via remote control unit MDU-V and LED or LCD keypad. The panels comes with a built in piezo siren as an option. The panel is also available without the built in radio transmitter.

Zone Inputs:	5 physical inputs on the control panel for connection of detectors + 1 zone inputs in the connected keyboards.
Zones:	6 zones with freely programmable parameters.
Areas:	1
Outputs:	1 weak (up to 100mA) and 1 powerful (up to 1A) programmable outputs OC (open collector) type, situated on the control panel.
Access Codes:	6 User codes, 1 Manager, 1 Engineer code.
Memory LOG:	256 memory events with date and hour of occurring
Report to monitoring station:	Built-in VHF/UHF LR radio transmitter module
Peripheral Devices:	<ul style="list-style-type: none">• LCD and LED Keyboards.• MDU-V remote control module
Programming:	<ul style="list-style-type: none">• By addresses• ProsTE software



Technical Specifications

Mains Transformer:	17VAC / 17 VA
Battery:	12V / 7 Ah
Current consumption:	1,0 mA for outputs
Power output:	12 V DC / 0,5 A, fuse
Remote controls:	1
Operating Temperature:	0°C / +40°C
Housing:	metal box
Dimensions:	227 x 209 x 80 mm



LED 62

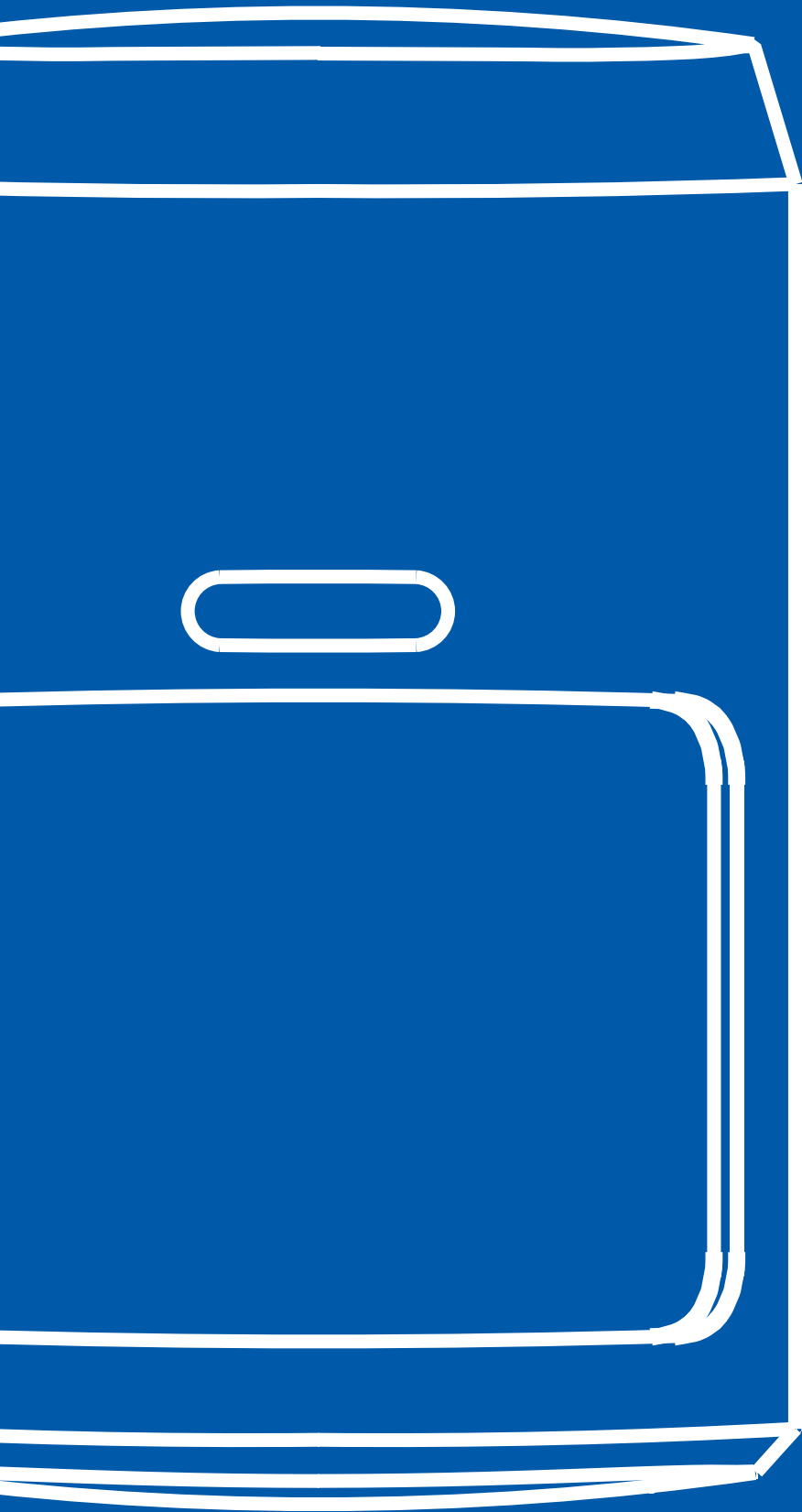
- Shortcut buttons for quick arming
- 3 fast buttons for sending of FIRE, MEDICAL and PANIC alarm messages to a central monitoring station
- LED indication for the system, zone status and arming modes
- Display of 12 zones and 2 partitions
- 1 programmable zone input
- The system parameters can be fully programmed
- Bi-directional TAMPER switch



SR 40

- For built in installation in VEGA6 enclosure box
- Power output - 95 dB/1m.

DETECTORS



TITAN

PIR DETECTORS



TITAN Series is a range of high quality PIR detectors suitable for medium to high risk commercial and residential applications where security cannot be compromised.

The TITAN PIR detector range has minimum 12kg PET Immunity option for each type. TITAN series detectors are equipped with very precise cylindrical lens which guarantees stable and reliable detection.

The detectors come with 5 year warranty. A bracket is available as option.

Titan AG

Titan DL

Titan QD 40

	Titan AG	Titan DL	Titan QD 40
Algorithm	Analogue	Digital	Digital
Filtering	Analogue	Digital + Analogue	Digital + Analogue
Range, m	1.5-15	1.5-15	1.5-15
Temperature compensation	Yes	Digital bidirectional	Digital bidirectional
RF Immunity	10 V/m; 80 - 2000 MHz	10 V/m; 80 - 2000 MHz	10 V/m; 80 - 2000 MHz
PET Immunity	Up to 12kg	12/20kg (selectable)	25/40kg (selectable)
Detection speed	0.2-3.5 m/s	0.2-3.5 m/s	0.2-3.5 m/s
Operating temperature	-20°C ÷ +50 °C	-20°C ÷ +50 °C	-20°C ÷ +50 °C
White light immunity, lux	6500	4000	6500
Sensitivity adjustment	1 and auto	1, 2 and 3 pulses	1 and 2 (PET)
Viewing angle	90°	90°	90°
Indication On/Off	LED	LED	LED
OptoMOS output	Yes	Yes	Yes
Operating voltage	9 - 18V DC	9 - 18V DC	9 - 18V DC
Consumption	<12mA	<14mA	<14mA

TITAN

PIR DETECTORS



Titan AG

- PIR detector with cylindrical lens
- 90° coverage area in 54 zones
- Operating range up to 15m
- Temperature compensation
- High white light immunity up to 6500Lux
- PET immunity: small animals up to 12kg
- Reverse polarity protection



Titan DL

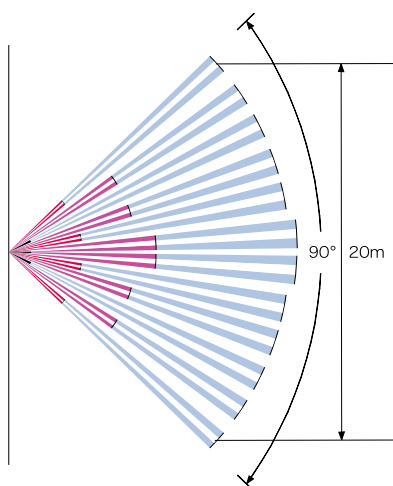
- PIR detector with cylindrical lens
- Digital processing algorithm
- Suitable for application in high class buildings -bank offices, storehouses, etc
- Digital bi-directional temperature compensation
- 90° coverage area in 54 zones
- Operating range up to 15m
- White light immunity up to 4000Lux
- PET immunity: small animals 12/20kg - selectable
- Reverse polarity protection



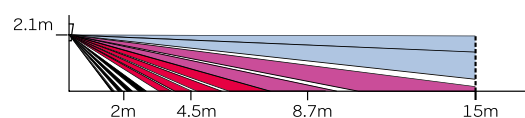
Titan QD 40

- PIR detector with cylindrical lens
- PET immunity up to 25/40kg - selectable
- Operating range up to 15m
- 90° coverage area in 54 zones
- Digital bidirectional temperature compensation
- Excellent white light immunity up to 6500Lux
- Reverse polarity protection

Lens Pattern - top view



Lens Pattern - side view



Pet immunity



TITAN AG (PET - 12kg)
TITAN DL (PET - 12/20kg)



TITAN QD 40 (PET - 25/40kg)

TITAN

DUAL TECHNOLOGY

Dual technology detectors assure extremely high level of protection with supreme quality.

For excellent performance in detection we combine Microwave and Glass Break with PIR technology providing flexibility for professionals.

Anti Masking and Anti Spray options are provided for TITAN MW

A bracket is available as option.

Titan MW/AM

Titan GB

Algorithm	Analogue	Analogue
Anti Masking	No/Yes	-
Range, m	PIR: 1.5-15 MW: 5-15	PIR:1.5-15 GB: up to 15
PIR Sensitivity	Maximum or Auto	1 Pulse or Auto
PIR Detection Speed	0.2 m/s - 3.5m/s	0.3 m/s - 3.0m/s
MW Sensitivity	With Trimmer, Frame Recognition	12/20kg (selectable)
MW Frequency	10,525 GHz (X-Band)	-
GB Frequency	-	5 - 10 kHz
Functions	-	Frequency and Amplification
Outputs	OptoMOS Relay	OptoMOS Relays - Separately
White Light Immunity, lux	4000	6500
Operating Temperature	-20°C ÷ +50°C	-20°C ÷ +50°C
LED for Status Indication	3 LEDs-PIR, MW, ALARM	Yes
Consumption Standby/Alarm, max	23/46mA@12V DC	17/32mA@12V DC
Operating Voltage	9 - 18V DC	9 - 18V DC

TITAN

DUAL TECHNOLOGY



Titan MW/AM

- Dual Technology (PIR+MW) PIR detector
- Digital Analysis
- Cylindrical lens
- Function "Triple Knock" - maximum protection against false alarms
- AntiMasking and AntiSpray for TITAN MW AM, covers GRADE3 according EN 50131;
- White light immunity up to 4000Lux
- PET Immunity up to 12kg (TITAN MW, for the PIR part only)
- Sensitive adjustment - MW, AM and PIR
- Reverse polarity protection



Titan GB

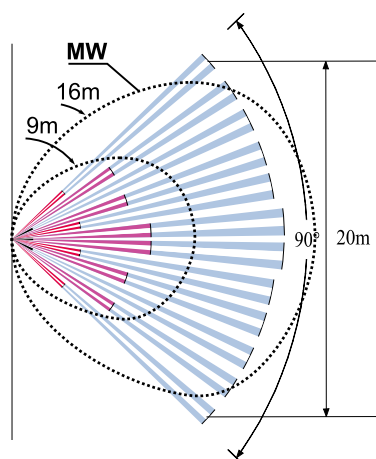
- Dual Technology (PIR + GBD glass break) detector
- Pulse count adjustment PIR and GBD
- Frequency adjustment - GBD
- Excellent white light immunity up to 6500Lux
- PET Immunity up to 12kg (for the PIR part only)
- Auto temperature compensation
- Reverse polarity protection



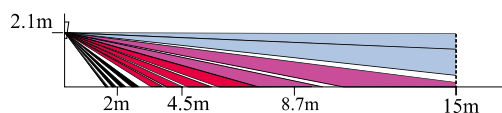
Bracket

- Bracket for TITAN and P-REX Series
- Suitable for wall and ceiling mounting

Lens Pattern - top view



Lens Pattern - side view



Pet immunity



TITAN MW (PET - 12kg)
TITAN GB (PET - 12)

OTHER DETECTORS



P - Rex

- PIR detector with spherical lens
- Coverage angle 90° - 110°
- Coverage range from 0.3m to 15m
- Creep zone - 0,3m
- Adaptive pulse count 1, 2 or 3
- Adaptive temperature compensation
- RF and EM immunity
- ESD protection



GBD 10

- Glass break detector
- Analogue analysis
- Adjustable sensitivity
- Adjustable frequency range
- Sensitive to sounds between 2 and 10 kHz



GBD 20

- Glass break detector
- Digital frequency analysis
- Detection of 4 different types of glass
- Pattern recognition technology
- Automatic sensitivity adjustment
- False alarm immunity
- Operating range from 1 to 7 meters
- Coverage area - 180°



GB Tester

- Assists the selection of appropriate place for glass break detector installation
- Two starting modes - automatic and manual
- Four types of glass break tests



AUMS-12S

- Magnetic contacts
- For door or window use
- Surface mounting with screws of twin adhesive tape
- N/O for closed loop systems
- Contact distance up to 20 - 25mm
- Lead wires length - 400mm

FIRE ALARM DETECTORS



SensoMAG F10 INTR

- Fixed temperature fire alarm detector with relay base
- Digital process algorithm
- Detects temperature over 60°C
- LED indication with 360° visibility
- Protected area - up to 35 sq. m
- Low profile design
- Low current consumption



SensoMAG R20 INTR

- Rate-of-rise temperature fire alarm detector with relay base
- Digital process algorithm
- Detects temperature over 58°C or change in temperature for a period of time
- LED indication with 360° visibility
- Protected area - up to 35 sq. m
- Low profile design
- Low current consumption



SensoMAG S30 INTR

- Optical-smoke fire alarm detector with relay base
- Digital process algorithm
- Automatic drift compensation
- LED indication with 360° visibility
- Protected area - up to 120 sq. m
- Low profile design
- Low current consumption



SensoMAG M40 INTR

- Combined optical-smoke and rate-of-rise fire alarm detector with relay base
- Digital process algorithm
- Automatic drift compensation
- LED indication with 360° visibility
- Protected area - up to 120 sq. m
- Low profile design;
- Low current consumption



Gasket Ring

- Compatible with SensoMAG S30 and SensoMAG M40 detectors
- Provides additional protection to the smoke chamber against dust and dirt
- Easy mounting



Deep Base

- Compatible with SensoMAG series bases
- For mounting on rough surfaces, outdoor pipelines, floating ceilings, etc

SIRENS

INTRUDER ALARM SYSTEMS



SR105

- Indoor siren
- Sound output - 105 dB/1m
- Piezo speaker
- Blue flash
- Plastic enclosure



SR110

- Indoor siren
- Sound output - 105 dB/1m
- Piezo speaker
- Plastic enclosure
- Tamper



SR200

- Outdoor siren
- Selectable sound output - 95 dB/1m; 117 dB/1m
- Electromagnetic speaker
- Plastic housing with inner metal cover
- IP54 and IK08 protection
- Built in tamper and spirit level
- LED flash



SR300 B

- Outdoor siren
- Selectable sound output - 95 dB/1m; 105 dB/1m
- Piezo speaker
- Plastic housing with inner metal cover
- IP54 and IK04 protection
- Built in tamper and spirit level
- Built in NiMH battery
- Flat cover for company sticker or logo
- Blue flash



SR300 O

- Outdoor siren
- Selectable sound output - 95 dB/1m; 105 dB/1m
- Piezo speaker
- Plastic housing with inner metal cover
- IP54 and IK04 protection
- Built in tamper and spirit level
- Connectors for accumulator 1x12V/2.1Ah
- Flat cover for company sticker or logo
- Orange flash

ACCESSORIES

INTRUDER ALARM SYSTEMS



MDU 2

- Universal remote control module
- Range - 80m
- Two independent channels
- Selectable trigger or pulse (1 - 20 sec.) mode for each channel
- 2 built - in power relays
- Two remote control units in the set
- Unlimited number of remote control transmitters



MDU-V

- Remote control module with transmitter
- Rolling code
- One channel
- Up to 15 transmitters
- Option to prohibit lost transmitter
- LED indication for relay output
- 4 programmable operation modes



SR200R Li + CM120R

- Wireless outdoor siren with universal bidirectional transceiver
- Compatible with any standard wired control panel
- 116 dB/1m
- IP54
- Inner metal housing and tamper button
- Lithium Battery included (optional)



PS12XX

- Power supply units
- PS1210 - 12V/DC, 1A
- PS1230 - 12V/DC, 3A
- Plastic box
- Transformer



PB-U

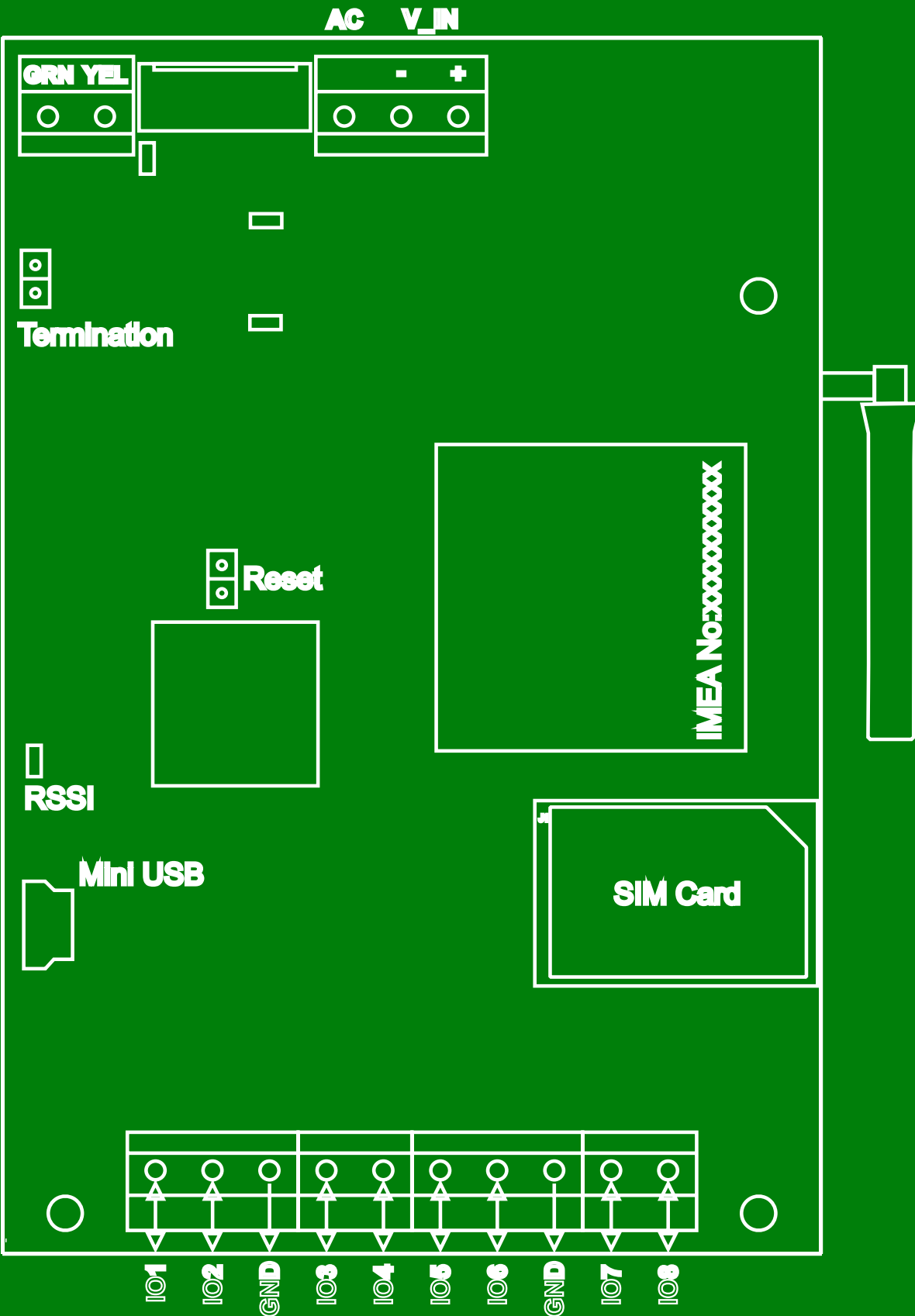
- Universal plastic box
- Suitable for ECLIPSE ZONE8, ECLIPSE PGM8
- Built in bidirectional tamper switch
- ABS plastic



SB-U

- Suitable for MRI4/8, AJAX GPRS, AJAX LAN, ARGUS, ECLIPSE ZONE8, ECLIPSE PGM8
- Built in bidirectional tamper switch
- ABS plastic

COMMUNICATION



AJAX SOLUTION

GPRS/GSM/LAN MODULES

AJAX GPRS/GSM



- Direct serial connection with Eclipse, Bravo and CA62
- Third party alarm panels connected on outputs
- 4 programmable inputs/outputs 100 mA, OC type
- 4 programmable inputs/outputs 500 mA, OC type
- 8 e-mail addresses for sending of information
- 16 SMS for the inputs and unlimited for the bus + 6 Service messages for troubles
- 8 telephone numbers for SMS message, Voice message, DTMF control, CLIP control
- 16 voice messages (7 sec. max) for each input
- DTMF, SMS, internet remote control (AJAX Server), JAVA
- Internet (AJAX SP WEB Application) remote programming of the module and alarm panel
- 1 TCP/IP and 2 UDP/IP Primary and Back-up addresses for connection with monitoring
- Buffer for 32 events - I/O events; FIFO
- AES 128 bit encryption
- SIA over IP - direct connection with Guard View software and third-party software (via driver)
- USB port for direct programming
- Dual band 900/1800 Mhz
- LED indication for the network status, the connection to the control panel, etc.

AJAX GPRS/GSM Simple



- Direct serial connection with Eclipse, Bravo and CA62
- SIA over IP reporting to AJAX SP
- 1 TCP/IP and 2 UDP/IP Primary and Back-up addresses for connection with monitoring
- SMS backup channel
- Internet (AJAX SP WEB Application) remote programming of the module and alarm panel
- Internet (AJAX SP WEB Application) remote control (arm/disarm/bypass) of the module and alarm panel
- Buffer for 32 events - I/O events; FIFO
- AES 128 bit encryption
- USB port for direct programming
- Dual band 900/1800 Mhz
- Power supply 9-30VDC
- LED indication for the network status, the connection to the control panel, etc.
- 2 telephone numbers for User SMS notification message

AJAX LAN



- 4 inputs/outputs
- 4 e-mail addresses for reporting messages
- Reporting to monitoring station
- E-mail notification messages
- Ethernet port 10/100Mbps
- USB port
- Security encryption mechanism
- Communication problem detection
- 3 LEDs for status notification
- Direct programming with ProsTE software
- Remote programming via AJAX SP WEB application

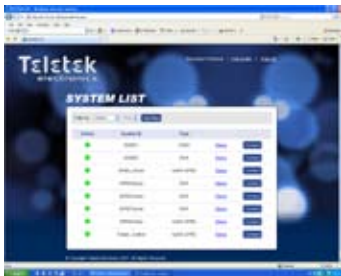
AJAX SOLUTION

SOFTWARE APPLICATION

AJAX SP is a comprehensive network solution for maximum reliability of every security system. Appropriate for use by monitoring centers and end users alike.

AJAX SP

- Online web based application
- Receives signals from AJAX GPRS/GSM and AJAX LAN modules installed at monitored sites
- Online monitoring and status information of alarm systems connected to the AJAX SP
- Transfers messages via LAN or RS232 to monitoring software with SURGARD MLR2 protocol
- Receives SIA protocol (TCP/UDP)
- Remote programming Teletek Electronics control panels and modules
- Remote Arm/Disarm/Bypass/Output control/LOG file view
- Up to 10 000 modules
- High speed data transmission, protected via 128bit AES encryption algorithm
- Based on OS Windows Server 2003/2008
- Available in two versions - AJAX SP Professional and AJAX SP Standard:



AJAX SP PROFESSIONAL - CD Software Pack; based on OS Windows Server; Administrator and WEB User application

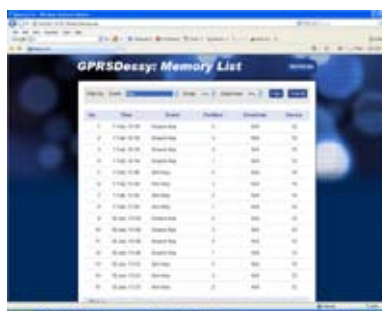
AJAX SP STANDARD - CD Software Pack; based on Windows Server 2003/2008; Administrator application

Recommended PC configuration for installation of AJAX SP:

Pentium CPU 2.0
250 GB disk place
2GB RAM
128 MB Video Card
CD-ROM
Ethernet interface
COM port

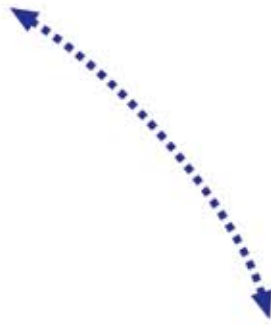
AJAX SP Station

- AJAX SP in hardware version
- All feature and characteristics of AJAX apply
- No additional hardware needed
- No installation needed
- Two Ethernet cards
- One COM ports
- Available in two versions - **AJAX SP Professional** and **AJAX SP Standard**





USER
 ARMING
 DISARMING
 VIEW EVENTS
 VIEW TROBLES
 HOME AUTOMATION



INTERNET



SECURITY CENTER
 MONITORING
 SUPPORT
 PROGRAMMING
 PROTECTION



Communication Network
 LAN
 GSM
 GPRS



ARGUS

GSM MODULE



ARGUS GSM

- Provides data connection via voice channel
- Sending of voice or SMS messages to a central monitoring station or directly to the User
- Primary or back-up communicator
- Telephone line monitoring
- System controlling via SMS message
- Home automation
- Function for checking the signal strength
- 6 programmable inputs/outputs
- 2 outputs
- 8 SMS messages
- 8 voice messages
- 8 telephone numbers
- Direct PC programming via ProsTE software
- Antenna with 3m flexible cable included
- Optional back-up power supply with 4 NiMH batteries, size AA

LONG RANGE RADIO

LRR 8000 Central Station



- 2 Ports for receiving information
- 1 Port for transmitting information
- 8192 sites capacity
- 1000 events log
- RSSI /measurement
- Computer connection serial port
- Metal box
- Bidirectional connection to LRR 8000 Repeater, using RADIAL protocol

LRR 8000 Repeater



- For expanding the application of LRR 8000
- Bidirectional connection to LRR 8000 Repeater, using RADIAL protocol
- 1000 events log
- RSSI /measurement
- Computer connection serial port
- Metal box
- IP64 for the metal housing

TP 2000 V/U

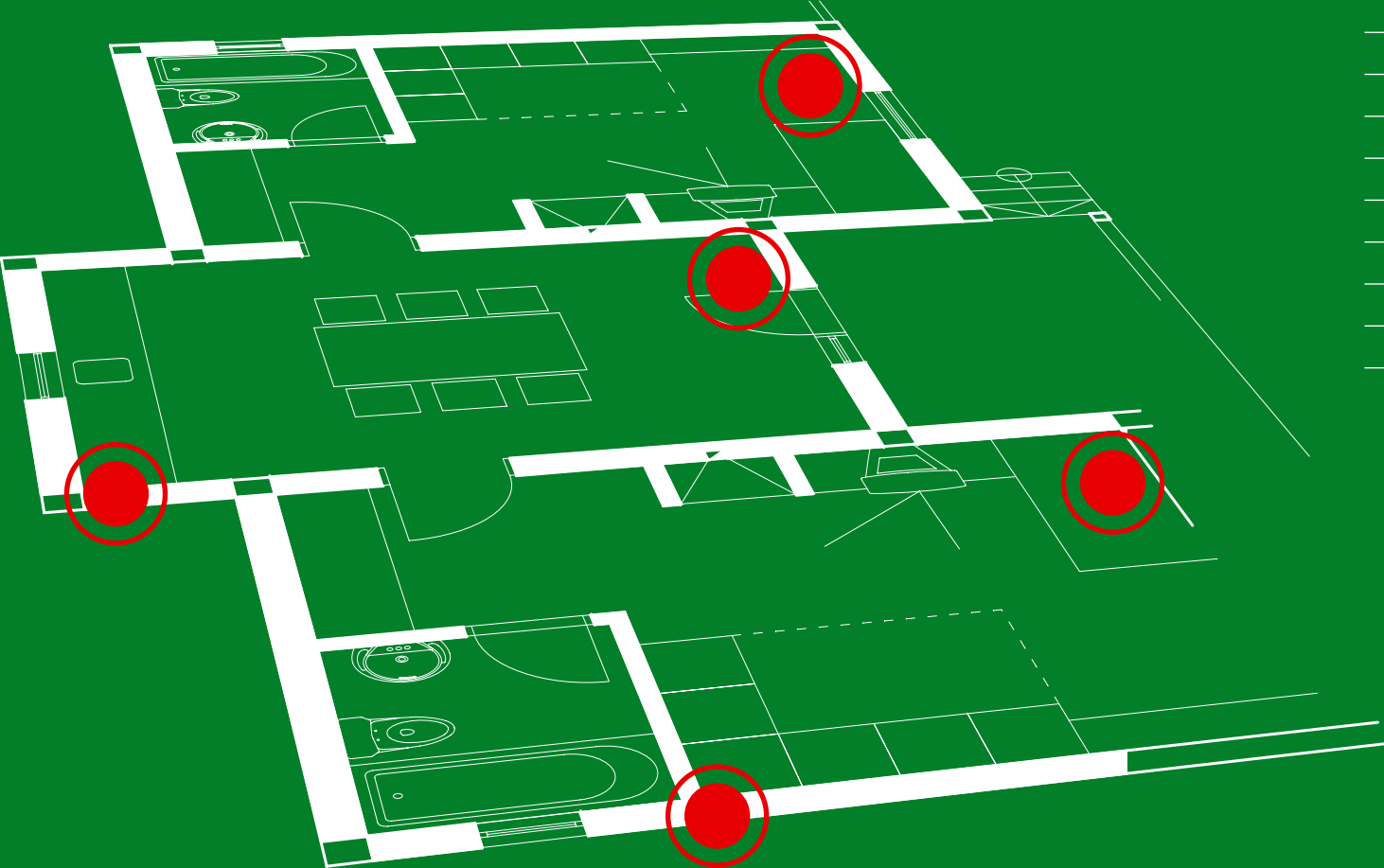


- Radio transmitter
- Compatible with LRR 8000
- Support of 2 communication protocols - Electronics Line and LARS
- Operating frequency VHF range - 148 - 174 MHz
- Operating frequency UHF range - 403 - 490 MHz
- Direct programming with ProsTE software

TP 2000S V/U

- Radio transmitter
- Serial connection with CA62, Eclipse 8/32/99.
- Transmitting frequency 146 - 174 MHz.
- Sends all messages in panel memory to monitoring station. There is no restriction about type and number of messages.
- 6 wire connection between TP2000S and alarm panel.
- Distance between TP2000S and alarm panel is up to 300m.
- Compatible with LRR8000 revision 5.8

SOFTWARE



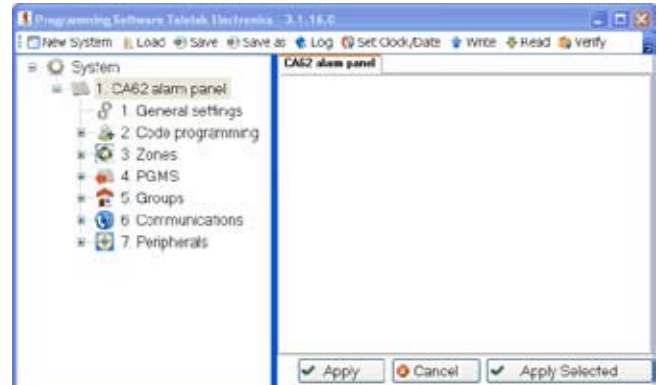
PROSTE

PROGRAMMING SOFTWARE

ProsTE is a software package for programming of Teletek Electronics intruder and fire alarm panels. The software allows fast and user-friendly programming to the benefit of installers.

Supported products

- Eclipse 8
- Eclipse 32
- CA62
- VEGA6
- IRIS
- SIMPO
- ARGUS
- AJAX LAN
- AJAX GPRS/GSM
- AJAX GPRS/GSM Simple
- TP2000 (ver. 8.xx)



ProsTE Advantages

- Intuitive and user friendly graphic interface
- Easy programming of all system parameters
- Saves time and effort
- Allows creation of default configurations in tdf (teletek data files) ready for use on site
- Decreases possibility of mistakes during programming
- No need to remember addresses or use programming manuals
- Completely free download and automatic update available at teletek-electronics.com
- Multilingual support
- Help wizard

GUARD VIEW

MONITORING SOFTWARE

Guard View is designed to serve companies acting in the field of monitoring of objects by centralized monitoring systems. Compatible with LRR 8000, AJAX, ARGUS

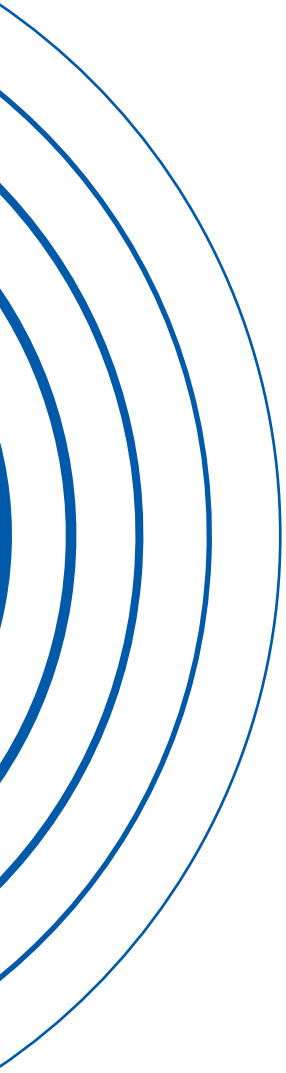


Features

- Compatible with most of the popular alarms receivers and alarm protocols: LARS, Electronics Line, Sur-Gard, Ademco Contact ID
- MySQL database - SQL server for maintenance of the relational database with local and net clients.
- Compatible with Windows operation systems - 32/64bit's version with installed NET. Framework 4
- Alarm monitoring window for ensuring operator's activity.
- Manager window for organizing the work regarding entering and updating information about the protected objects as well as creating reports from the incoming signals in the archive.
- Driver programs for receiving signals from COM and LAN ports
- Test program simulating signals from the protected objects in the database

Guard View Advantages

- Detailed information for all incoming messages
- Log in with different accounts – Operators, Managers, Administrator
- Complete file for every site with address, contact person, location details, picture of site, instructions for monitoring station staff
- Additional windows for filtered messages
- File for site in alarm
- Flexible database administration
- Up to 10 000 sites management
- Detailed reports for received messages
- Sending SMS messages to Users





www.
teletek-electronics
.com

a: "Srebarna" 14A Str, Sofia - 1407, BULGARIA
t: (+359 2) 9694 800
f: (+359 2) 962 52 13
e: info@teletek-electronics.bg