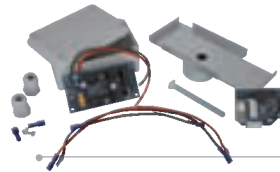


ACCESSORIES FOR K800 24V



ACG5471 EXPANDER 24V
(to add extra features to KS 24V control board)
See page 94



AD00318 SET SOLAR AMPLIFIER for K800 24V.
Interface for 2 solar panels up to 200W 12V each



ACG9515 BATTERY
2,2Ah 12V for K800 with ACG4662 (order 2 pieces for each ACG4662)



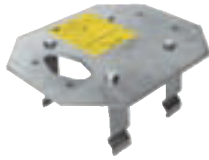
ACG4662 BATTERIES CHARGER for K800 24V with support for two 2,2Ah batteries (ACG9515 x 2)

ACCESSORIES FOR K800-1400-2200



ACG4665 PROBE for K-CRX 2007 and S1 to keep the motor warm (for prompt start at low temperatures)

ACCESSORIES FOR ALL K OPERATORS



ACG8107 BASE PLATE for K800-1400-2200



ACG8672 RELEASE LOCK WITH ALLEN KEY



ACS9000 Module 4 RACK (sect. 25 x 22 mm) in Nylon with right-angle (up to 1000 kg) in 1 m bars per m
ACS9001 Set 10 m



ACS9006 Module 4 RACK (sect. 25 x 22 mm) in Nylon with right-angle (up to 1000 kg) in 1 m bars per m



ACS9020 Module 4 RACK in iron (sect. 22 x 22 mm) (up to 2200 kg) in 2 m bars per m



ACS9040 Module 4 RACK in iron (sect. 22 x 22 mm) with right-angle member (up to 2200 kg) in 2 m bars per m



ACS9050 Module 4 RACK in iron (sect. 22 x 22 mm) with CATAPHORESIS treatment, right-angle (up to 2200 kg) in 2 m bars per m



**Discover KIT K800 Wi-Fi. You have to connect only the power supply line to the operator.
All accessories are managed WITHOUT WIRES!
At only extra 240 €**



KIT K

See page 69

starting from