



## EHB-910W

### PENDANT LOUDSPEAKER

#### FEATURES

- Extraordinary sound and music reproduction
- Stream line aesthetic design
- High impact white ABS material
- Durable metal suspender
- Compliance with international safety standards

EHB-910W is a 10W powerful indoor pendant loudspeaker in a unique shape of a dangling ball measuring 180 mm in diameter. Attached with a 700 mm long strong metal suspender, the loudspeaker is intended for excellent sound and music reproduction.

Covered with high impact ABS material, the white pendant is also water and dust protected ,making it suitable for use in both traditional and modern environments, indoor or outdoor applications such as sports fields, parks, exhibition halls, factories and swimming pools.

On the top of suspender, there is a screwing hole which can be used to mount the pendant into the ceiling in an easy and quick way.

#### SPECIFICATIONS

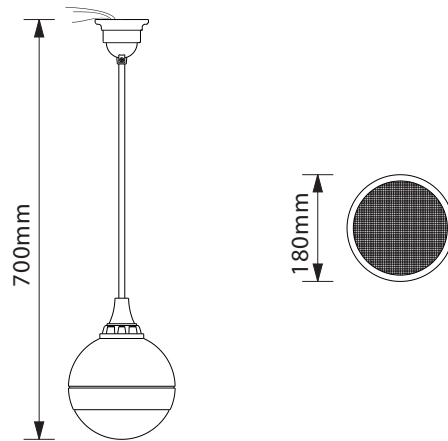
Model	EHB-910W
Max Power	20 W
Rated Power	10 W
Power taps @100V	10 W / 5 W
Power taps @70V	5 W / 2.5 W
Sensitivity	92.5 dB
Max sound pressure level (1 m)	102 dB
Frequency range (-10 dB)	200 Hz - 20 KHz
Dispersion angle	140°
Rated input voltage	70 V / 100 V
Rated impedance	1 KΩ / 2 KΩ
Dimensions	Φ 180 x 700 mm
Diameter of speaker	4.5"
Weight	1.2 kg
Material	ABS
Color	White

#### ORDERING INFORMATION

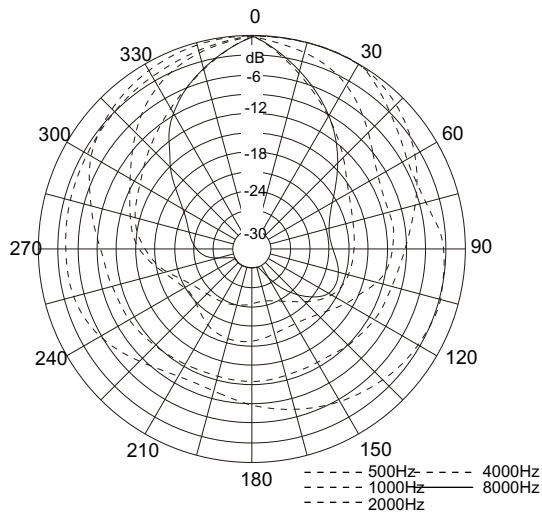
EHB-910W

10W, 4.5" Plastic Pendant Loudspeaker, White

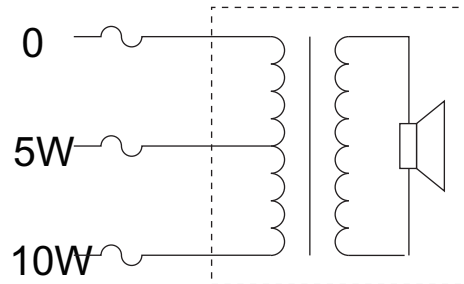
## Front and back views



## Direction Diagram



## Circuit Diagram



## Frequency Response at dBspl (20uPa)@1m, 10W/100V input, 1/3 oct smoothing

