

Intelligent visual doorbell

Instruction for use

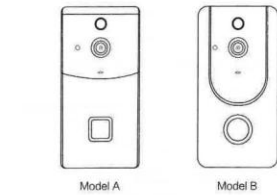


- Method 1: Scan the QR code for quick download;
- Method 2: Search for "iC See" in the mobile app store and download it;

CE FC RoHS

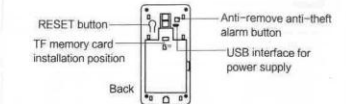
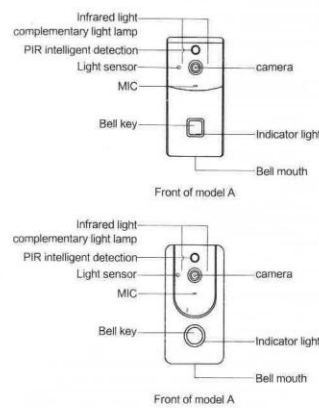
Packing list

Please confirm whether it is in good condition or not after you open the packaging of the product, and please confirm whether the fittings are complete or not according to the following figure.



Introduction of appearance

Be familiar with the interfaces and buttons of the device before use.



Note: Under the condition when device is activated, press and hold the RESET button for 5 seconds, and release the button after you hear the voice prompt of "Reset to factory settings, do not disconnect the power supply", you can reset it to the factory default configuration.

Note: About the battery! The battery are not included.

- All the 18650 lithium batteries with flat positive electrode and battery electrode shall not be installed.
- The doorbell needs to be installed with the 18650 lithium batteries with protrusive positive electrode.
- Figure for battery with flat positive electrode and battery with protrusive head. Total length: 65-70mm (All the 18650 lithium batteries with protrusive positive electrode with length from 65 to 70 mm can be used).

Introduction of the indicator light

Always lighting of the blue indicator light	Start up
Slow flashing of blue indicator light	Remote login of user
Slow flashing of red indicator light	Insufficient power of the battery

Guide for quick operation

1. Installation of device

Step 1: Install the back panel of the doorbell at the place where you need to install the device. (setscrews are needed for the installation on walls of cement and stone, and wood screws or 3M glue can be used for the installation on wood walls)

Step 2: Install the device body on the back panel through the buckle.

2. Settings

As for the process of adding the configuration for the device, please refer to the following (01/02/03) introduction for the operation:

01. The login of user

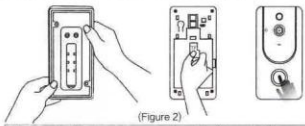
- Enter the login interface by opening the "Super See" APP. You can use "WeChat Quick Login" directly if you have WeChat account (as shown in Figure 1).
- You can also register a new account and log in (as shown in Figure 1).



Click on "Register" and enter the corresponding information. (Figure 1)

02. Preparation of the device

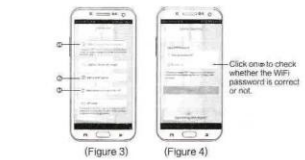
Press the back panel by your thumb to slide it down, and open the back panel to install the batteries. After finishing the installation of the device, press the bell key of the device for a short time to activate the doorbell. (Figure 2)



Please note: There is a voice guide throughout the complete process of device configuration process. You can start to configure the device network after you hear the voice prompt of "Start Quick Configuration".

03. Adding of device

- After you login successfully, click on "+" in the upper right corner, to select "Add My Device" (Figure 3). According to the voice prompt of the APP, you shall enter the password of router, and then click on "Ok" (Figure 4) to start configuration. And at the same time please press the doorbell button once, ensure the doorbell is in the awakening status.



Click one to check whether the WiFi password is correct or not. (Figure 3)

Click one to check whether the WiFi password is correct or not. (Figure 4)

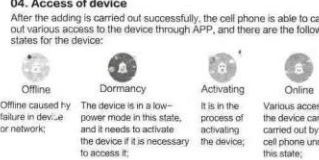
- In the searching process, it will prompt "Connecting, please wait", "Connect to the router successfully", and then it will prompt to input "Camera password" (please remember it) (picture 6) and enter into the next input "Camera name" to finish the connection.
- Equipment will prompt Click to enter into the monitoring interface (picture 7) and carry out the regular operation and settings.



Note: 1. Add my device (recommended): Connect the device to the router quickly. 2. Add shared devices: Add devices that are shared by others. Add the device by entering the serial number of device or the information code that is shared or by scanning the QR code of the device. 3. Add the devices on the same router: The device has been connected to the router, and the devices can be added by this way when the cell phone has also been connected to this router of the device for a short time to activate the doorbell. (Figure 2)

04. Access of device

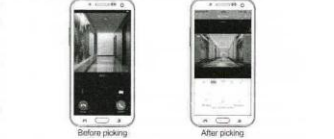
After the adding is carried out successfully, the cell phone is able to carry out various access to the device through APP, and there are the following states for the device:



Offline: Offline caused by failure in device or network. Dormancy: The device is in a low-power mode in this state, and it needs to activate the device if it is necessary to access it. Activating: It is in the process of activating the device; various access to the device can be carried out by the cell phone under this state. Online: Various access to the device can be carried out by the cell phone under this state.

05. Remote view

When you click on the device option for the first time, it will activate the doorbell; and click into the doorbell to view the interface. 06. Caller reminder notice: When the ring button of the device is pressed by a visitor, the app will press the alert for call and then "answer" shall be clicked to start the call. All images outside the door can be seen at a remote position.



07. The configuration of ding-dong ringing (optional)

- Model A
- Switch on the power supply for the ding-dong machine, press and hold the volume key (icon) for 3 seconds and shall not release it, and press the doorbell button immediately; if it rings in ding-dong when pressing the doorbell button again, it proves that it is successful for the pairing; Model B
 - Switch on the power supply for the ding-dong machine, press and hold the volume key (icon) on the panel lights up, and then release it, and press the doorbell button immediately; if it rings in ding-dong when pressing the doorbell button again, it proves that it is successful for the pairing;
2. If it is not successful for the pairing of the product, please switch off the power supply for the ding-dong machine, and implement the pairing again according to step 1.



Model A: Music key, Volume key. Model B: Volume key, Music key.

8. Receiving of message

When the doorbell is pressed by a visitor or an alarm is generated, the device will send a message to the cell phone, and you can receive the message by the following two ways:

1. Receive the messages via WeChat



2. Receive the messages via "iC See"



Please note: If the cell phone is set to the functions of power-saving such as the screen reading, disconnecting internet, etc, it will cause that WeChat is not able to receive the message in a timely manner. As it is inconsistent with the default handling of the message blocking for the phones with Android system, it is recommended to use WeChat to receive the message except the iPhone and Huawei phones.

- 雷达搜索过程中(图5), 会提示 "正在链接, 请稍后" "链接路由器成功" 后, 会提示输入 "摄像头密码(请牢记)(图6)" 进入下一步; 输入 "摄像头名称" 完成链接;
- 设备会提示: 点击即可进入查看界面(图7), 并进行相关操作和设置。



注: 添加我的设备 (推荐): 把设备快速连接到路由器上。 添加分享的设备: 添加他人分享给自己的设备。通过输入设备序列号或分享的二维码或扫描设备二维码的方式添加。 添加同一屋檐下的设备: 设备已连接在路由器上, 手机也连接路由器时, 可用此方式添加设备。

04. 访问设备

添加成功后, 手机通过APP可以对设备进行各种访问, 设备有以下几个状态:



05. 远程解锁

当你第一次点击设备选项时, 它会唤醒门铃; 并点击进入门铃查看界面。

Common problem

- Q: How does the device store the video?
- A: The device supports maximum 32G built-in memory card, and it will cover the oldest video content by automatic cycle when it is full.
- Q: The device is offline abnormally. How shall it be checked?
- A: ● Check whether the power of the device is exhausted or not ● Reconfigure the camera ● Check whether it is normal for the home network broadband
- Q: How shall the network environment be switched?
- A: When the device is used in a new network environment, please reset it to the factory settings and restart the configuration.
- Q: Why is there no respond by pressing the RESET button when the device is started?
- A: It needs to wait for 8 seconds before pressing the RESET button after starting the device by activating the it through pressing the bell key.
- Q: Why is there no alarm pushed when there is someone hanging about?
- A: The alarm message reception may be turned off, or the user log in the device remotely.

Note

- Please change the user password when using this product to prevent it is embezzled by illegal person.
- Do not install the device in the place where it is wet, dusty, or accessible to children.
- Please use and store the device within the allowable range of temperature and humidity. Please do not disassemble the device according to your wishes.

Special statement

- It is subject to the actual object for the product, and the instruction for use is for reference only.
- The APP and the device firmware of product will be updated from time to time. If there is an upgrade, please upgrade it online, and it will not be informed separately. The instruction for use is for reference only.
- There may be contents included in the instruction for use that are inaccurate technically or that are inconsistent with the functions of the product or that are printed wrongly, and it shall be subject to the final explanation of the company.

06. 来电提醒通知

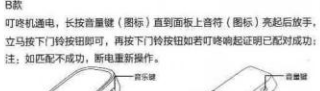
当访客按下设备的铃声按钮时, APP会按下推送提醒, 然后点击接听开始通话, 即可远程查看门外中的一切影像。



07. 叮咚响铃设置(选购)

A款: 叮咚机通电, 长按音量键 (图标) 3秒后不放手, 立马按下门铃按钮即可, 再按下门铃按钮如若叮咚响铃证明已配对成功;

B款: 叮咚机通电, 长按音量键 (图标) 直到面板上音乐 (图标) 亮起后放手, 立马按下门铃按钮即可, 再按下门铃按钮如若叮咚响铃证明已配对成功;



注: 如匹配不成功, 断电重新操作。

快速操作指南

1. 设备安装

- 第一步: 在需要安装设备的位置安装门铃背板。(在水泥、石料墙面上需要用到膨胀螺丝, 在木质墙面上可以用木螺丝或3M胶)
- 第二步: 将设备本体通过插扣安装到背板上。

2. 设置

设备添加配置过程, 请参照以下 (01/02/03) 介绍操作:

01. 用户登录

- 打开 "超级看看" APP进入登录界面, 如果您有微信可以直接使用 "微信快速登录" (如图1);
- 您也可以注册新账号并登录 (如图1);



点击 "注册", 输入手机号和密码即可 (图1)

08. 消息接收

当访客按下门铃或者有报警产生时, 设备会给您手机发送消息, 您可以通过以下两种方式接收消息:

1. 通过微信接收消息



使用微信账号登录超级看看 设备通知消息中设置微信互联 微信中搜索并关注公众号

2. 通过超级看看接收消息



设备通知消息中接收接收消息 确认当前联系人 消息查看后

请注意: 如果手机设置为息屏屏保功能可能会导致消息不能及时收到消息, 由于安卓手机对于消息拦截的默认处理不一, 除了iPhone华为手机, 建议使用微信接收。

02. 设备准备

双手拇指按住门铃背板下滑, 打开门铃安装电池。

将设备安装好后短按设备响铃按钮门铃 (图2)



请注意: 设备配置过程中会有语音引导, 待听到 "开始快速配置" 的语音提示后, 可以开始配置设备网络。

03. 添加设备

- 登录成功后, 点击右上角 "+", 选择 "添加我的设备" (图3) 解除APP端的语音提示, 输入路由密码, 点击 "确定" (图4) 开始配置, 同时请按一次门铃按钮, 保证门铃切换状态中。



点击 "+" 添加我的设备 (图3)

点击 "确定" 开始配置 (图4)

常见问题

- Q: 设备如何存储录像
- A: 设备最大支持32G内置内存卡, 在存满后将自动循环覆盖最早视频内容。
- Q: 设备异常离线, 如何检查?
- A: ● 检查设备是否电量耗尽电池没电, 按钮会显示红色闪烁。 ● 重新配置摄像头 ● 检查家里的网络宽带是否正常
- Q: 如何切换网络环境?
- A: ● 在新的网络环境使用时, 请恢复出厂设置重新开始配置。
- Q: 为何开机后RESET键没有反应?
- A: ● 在按响铃按钮后才可以按RESET键。
- Q: 为什么有人报修却没有推送报警?
- A: ● 报警消息接收可能被关闭, 或者用户远程登录设备, 微信配置秒数在5秒内最合适。

注意

- 请在对本产品的同时修改用户密码, 以免不法分子盗用。
- 请勿将设备安装在潮湿、有灰尘、儿童容易接触到的场所。
- 请在允许的温湿度范围内使用和贮存, 切勿随意拆卸设备。

特别声明

- 产品请以实物为准, 说明书仅供参考。
- APP和产品设备固件不定期更新, 如有升级请自行在线升级, 恕不另行通知, 说明书仅供参考。
- 说明书可能包含技术上不准确的地方, 或与产品功能不相符的印刷错误的地方, 请以本公司最终解释为准。