

**Features**

- Built-in 100v/70v transformer
- Wall mount type loudspeaker
- 5" +2" two ways speaker unit
- Power taps 1.5w-3w-6w @100V
- Metal grille and ABS enclosure of white color
- Easy and fast wall mount installation

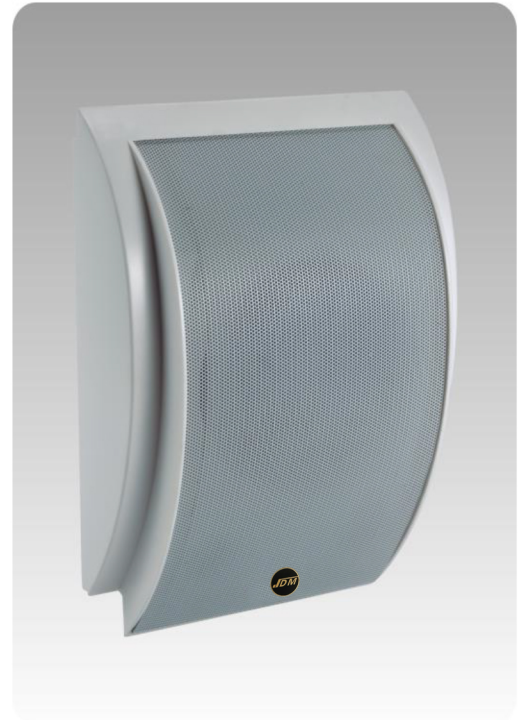
**Description**

The ws-110 is a wall mount speaker built-in 70v/100v transformer. The 70v/100v transformer technique reduces line losses on longer distance and allows easy parallel connection of multiple loudspeakers.

The built-in 5"+2" two ways speaker driver is designed of wide frequency response 90-18kHz, the 1.5W, 3W & 6W three power taps are helpful for different applications varies from room size and ambient noise surroundings.

The metal grille and ABS enclosure are of white color. Easy and secure wall mount installation.

It is ideal choice for industrial and commercial applications in hotel, school, office and factory where background music and paging is needed.



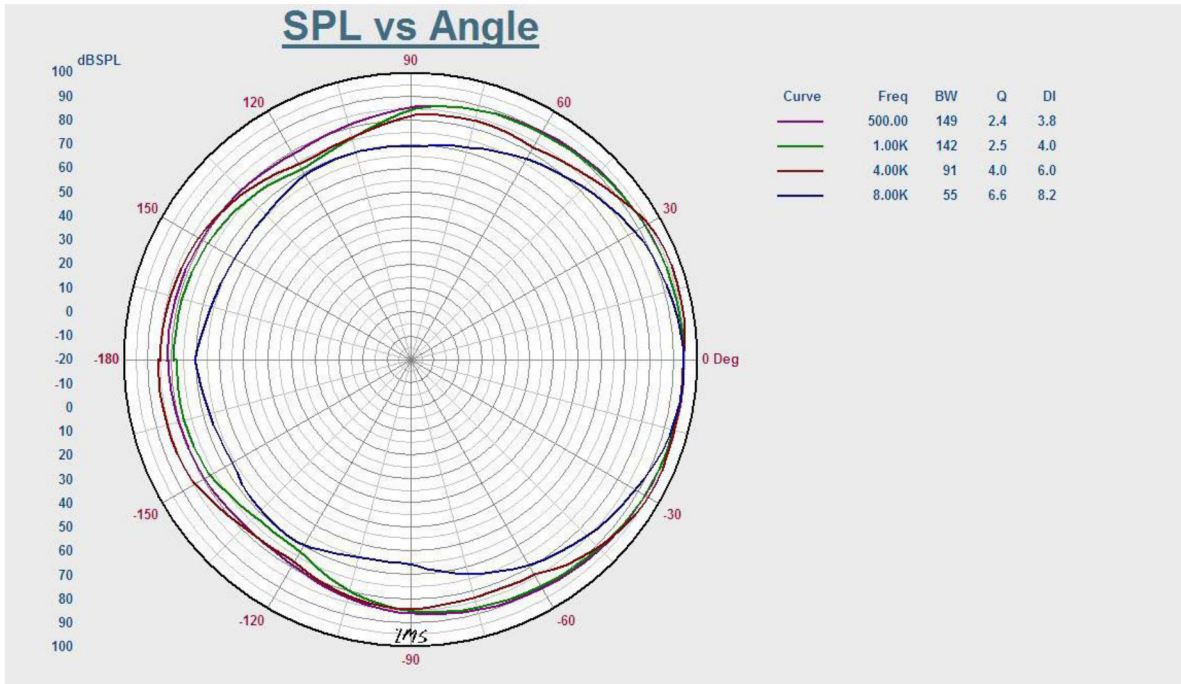
**Specification**

Model	WS-110
Power Taps @100V	1.5W, 3W, 6W
Power Taps @70V	0.75W, 1.5W, 3W
Impedance	Black: Com Red:6.7 KΩ/3.3 KΩ/1.7KΩ
SPL(1W/1M)	90dB±3dB
Max. SPL (Rated W/1M)	98dB
Frequency Response (-10dB)	90-18KHz
Finish	Baffle: ABS, White Grille: Steel, Gray
Speaker Driver	5" x 1 2" x 1
Dimensions	285 x 200 x 85mm
Weight	1.3kg
Mounting	Hook

Appearance:



Direction Diagram:



Frequency Response:

